

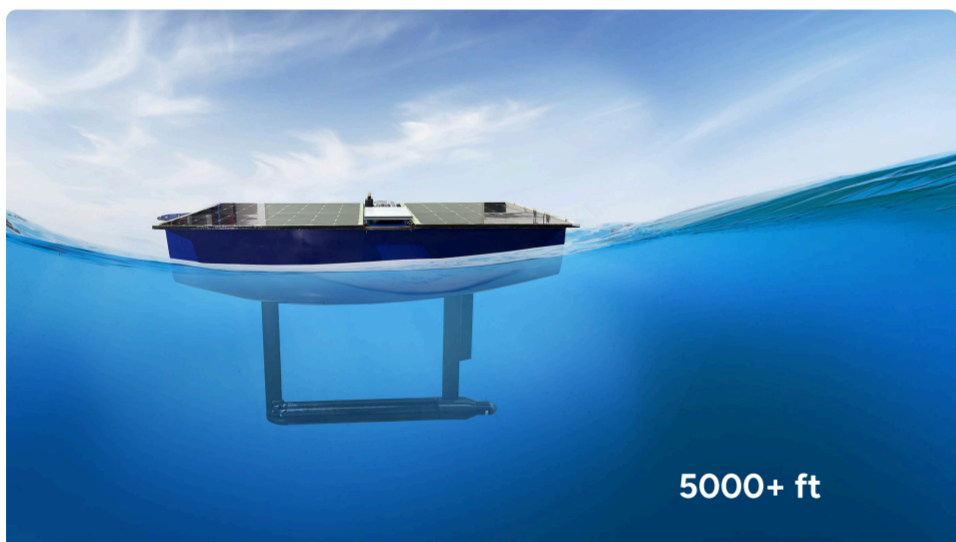
Spotter Scout



Spotter Scout is a Spotter that you can position: the same trusted wave, weather, and ocean sensing, now on an uncrewed surface vehicle (USV) that can station-keep, transit, or return home after 6+ months unattended. Deploy alone, or in a network for extended coverage.

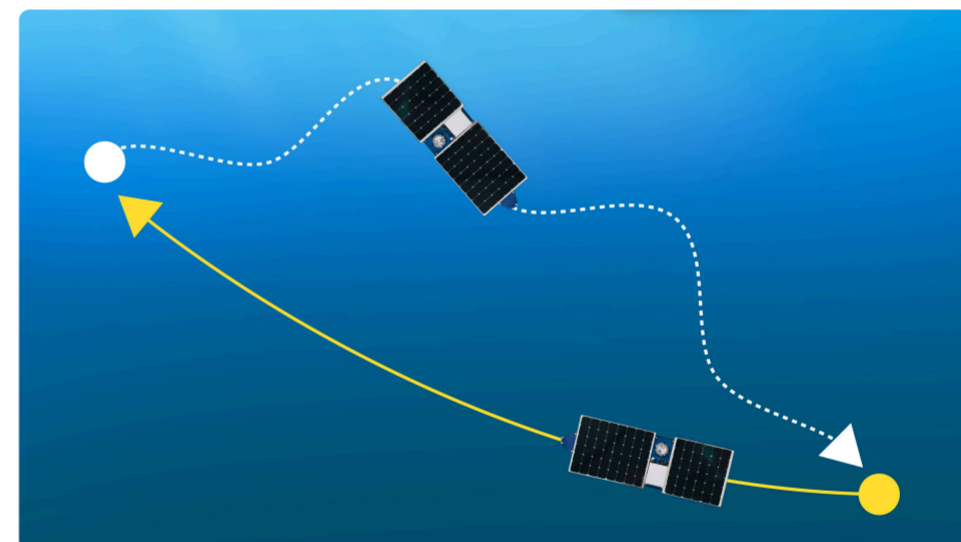
- ① **No Mooring Required**
Operate where moorings are impractical (e.g. too deep or not permitted). No anchor, no depth limits.
- ② **Real-Time Data Access**
View observations instantly via the Spotter Dashboard and API, with cellular or satellite telemetry.
- ③ **Simple Deployment**
Fits in a standard van. Launch from any slipway, or from a vessel with a single-point lift.

Mission Modes



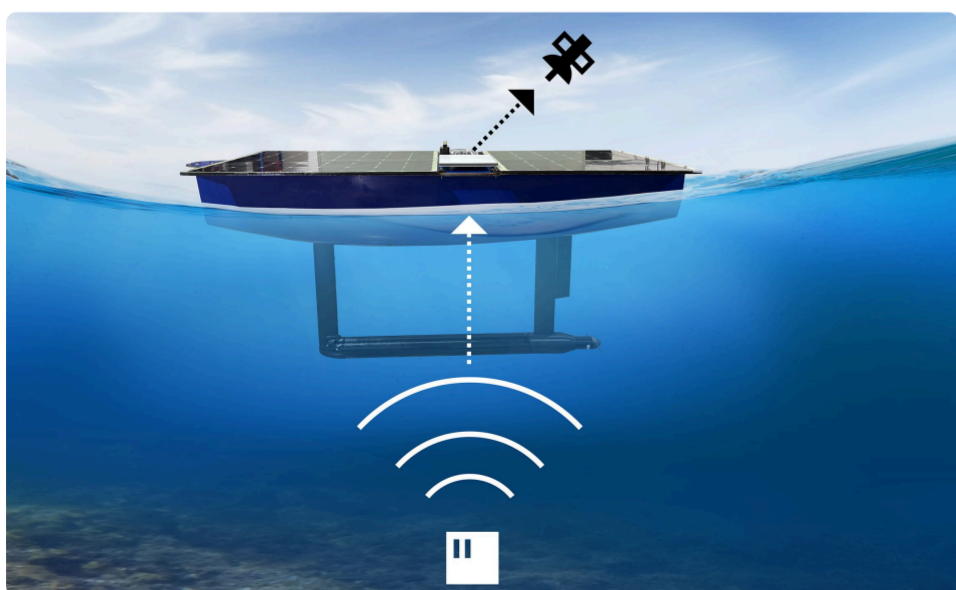
Deep Water Station Keeping

Hold position offshore without a mooring. Configure your station-keeping radius from 50m to 10km and maintain presence for months.



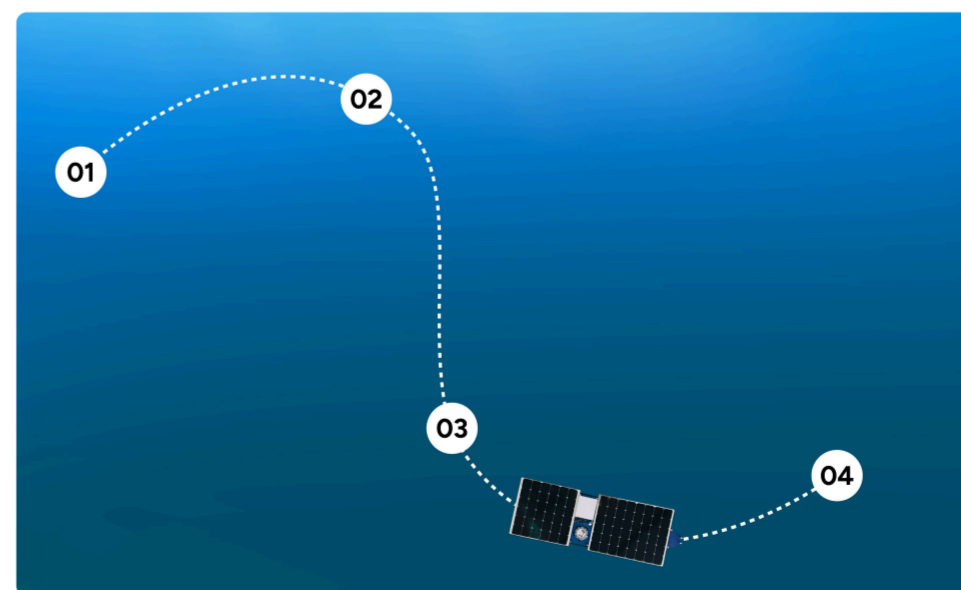
Return-to-Home Drifting

Deploy as a drifter to follow currents and collect data along the way. When the mission is complete, command it to return. No retrieval vessel required.



Subsea-to-Satellite Gateway

Relay data from seabed sensors to the cloud without fixed infrastructure. Receive acoustic transmissions and forward via satellite, bridging seafloor to dashboard.



Spatial Survey & Gap Filling

Transit between locations to measure how conditions vary across a region. Fill coverage gaps in your Spotter network or scout new deployment sites.

Core Specifications

Length	2.5 m
Beam	0.8 m
Draft	0.6 m
Weight	70 kg
Cruise Speed	3 knots
Endurance	6+ months
Battery-Only Range	200 nm
Solar Array	340 W
Battery Capacity	2kWh
Operational Sea State	Sea State 7-8
Survivable Sea State	Sea State 9
Connectivity	Cellular, Iridium, Starlink

Spotter Sensing

Wave Frequency Range	0.03 - 0.8Hz (30s - 1.25s)
Wave Direction Range	0 - 360°
Sampling Rate	2.5Hz
Wave Displacement Accuracy	Approximately ±2 cm
Barometer	±0.5 mbar at 25°C (700-1100 mbar)
Wind (Derived)	Speed and direction

*View [Spotter Buoy spec sheet](#) for complete sensing details.

Payload & Options

Payload Capacity	30 kg / 300L
Payload Voltage	5 - 24 V
Payload Mounting	Surface, subsurface, or towed
Subsurface Depth	~1 m (keel-mounted)

AIS Transceiver

Class B AIS for active broadcast. Standard configuration includes AIS receiver only.

Bristlemouth Payloads

Expand sensing with compatible sensors & instruments. Max one payload per USV.

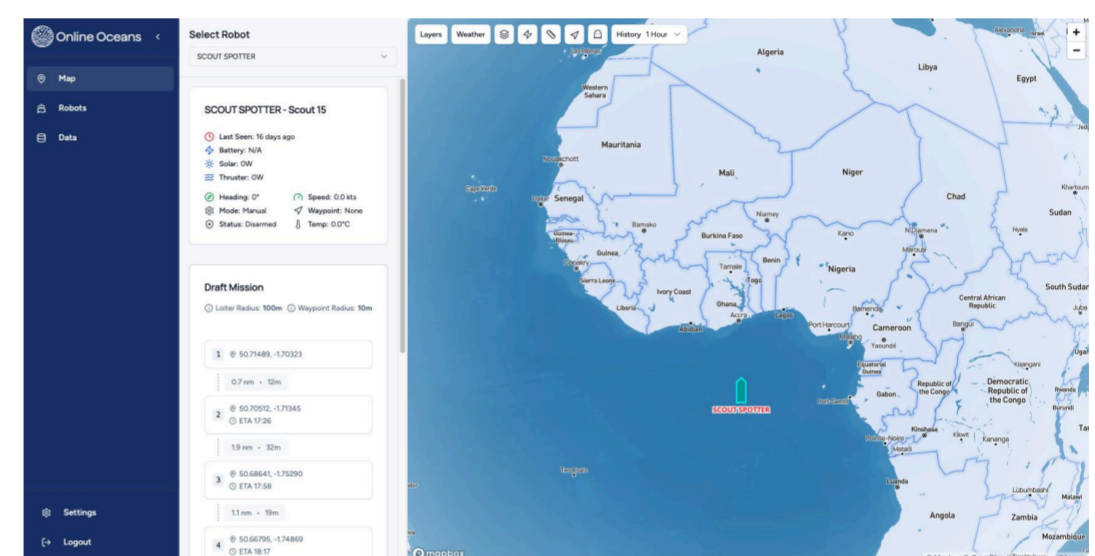
[View example payloads →](#)

Navigation & Control

Station Keeping Radius	50 m - 10+ km (configurable)
Waypoint Navigation	Multi-point with loiter times
Collision Avoidance	AIS-based, configurable radius
Fleet Capacity	50+ units per operator
Onboard Camera	HD time-lapse & video. Live streaming via Starlink

Tether C2 Platform

Plan missions, set waypoints, and monitor navigation. Browser-based control for desktop or mobile.

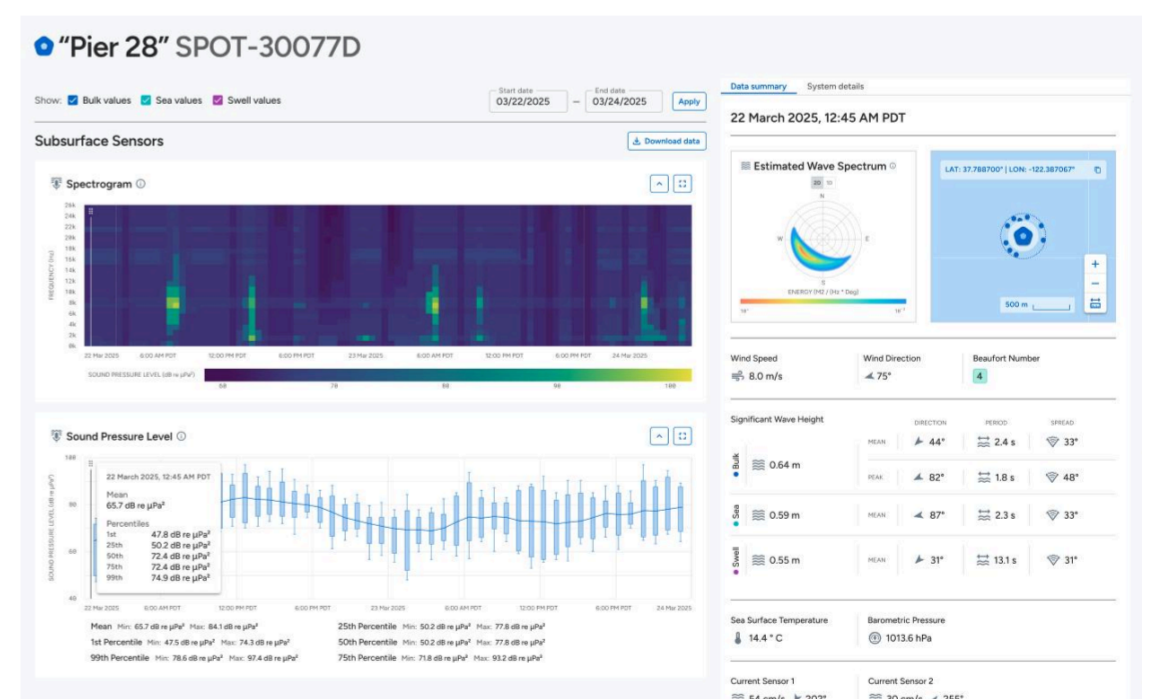


Plan missions and monitor navigation from any browser.

Data Access

Spotter Platform

View real-time and historical observations. Configure alerts, download data, and integrate via API.



View real-time observations and historical data in the Spotter Dashboard.